



Lindsey Kallis
Natural Resource Specialist

Outreach & Education



Lindsey Kallis
Natural Resource Specialist

Outreach & Education



Lindsey Kallis
Natural Resource Specialist

Outreach & Education

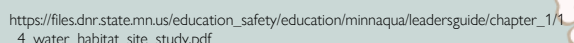
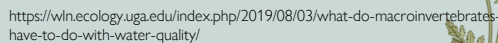


River Watch

WQ Sampling

- Collect Water Data
- Collect a water sample with the Van Dorn or Dipping Cup
- Test Water Clarity with Secchi Tube
- Collect pH, Conductivity, Temperature, and Dissolved Oxygen with Sonde
- Test Turbidity with Turbidimeter
- Measure stage of river/stream
- Take notes on vegetation, stream conditions, and weather





- Where to find them
- How to collect them
- Different types of Macroinvertebrates
- How to identify them using Dichotomous Key
- Aquatic Insect Life Cycle
- How to calculate Pollution Tolerance Index for their river/stream



River Explorers

- Students learn to kayak
- Use waterproof cameras to take photos of:
 - Erosion
 - Animals
 - Scenery/Obstacles
- Red Lake County Central School (RLCC) visited the Red Lake River and Thief River confluence.
 - LaFave Park in TRF MN



River Watch 2023-2024 Kickoff Event

Classroom style learning



Canoeing with Wilderness Inquiry



3 Day Kickoff event (September. 26th-29th) held in Moorhead, MN,
East Grand Forks, MN and Thief River Falls, MN

2023-2024 Forum: Your Watershed, Your Community, Your Forum



- Assignment: Create a Sampling Binder, Podcast, Calendar and Posterboard
- Was held February 28th, 2024, at Alerus Center in Grand Forks, ND
 - Cayla Bendel from the North Dakota Game and Fish kicked the day off by talking to students about how a career path isn't always straight and narrow.
 - Eight different educational booths were present to teach students about various topics.
 - GIS, Forestry, Drones, Macroinvertebrates etc.

FORUM WINNERS



1st Place

Norman County East



2nd Place

Minto High School



3rd Place

Cavalier High School





River of Dreams

- Cross-curriculum watershed education program tailored to elementary students based on the book “Paddle-to-the-Sea”
- Learn watershed functions and terminology
- Discover geography of local watersheds and how they fit into larger drainage areas
- Design and decorate 14” cedar canoe
- Write a story or poem for their canoe’s journey.
- Launch canoes into a local river
- Track canoes at riverofdreams.org



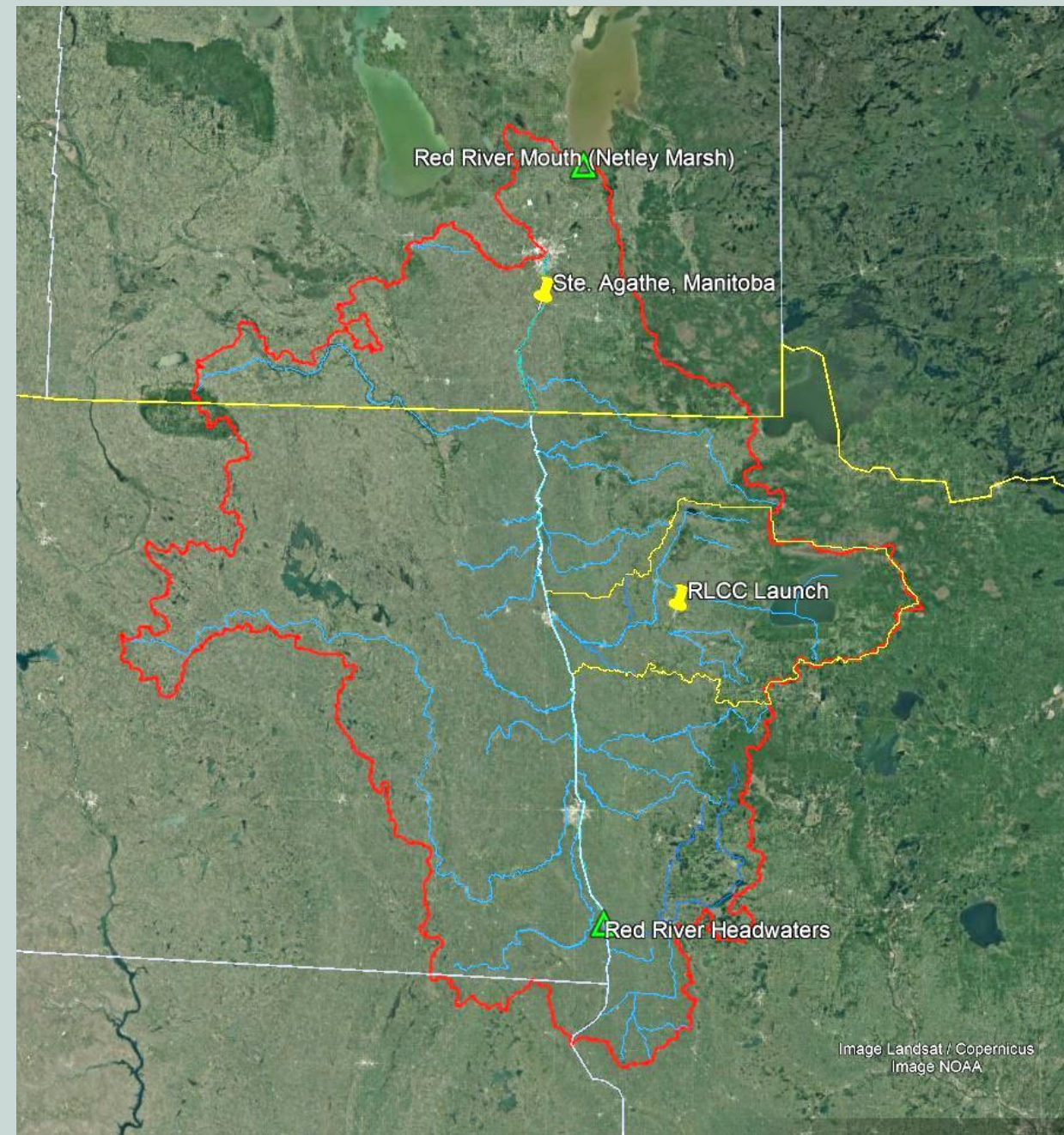
River of Dreams



- Started 2000-2001
- Ran out of funding 2008-2009
- Relunched in 2015
- Currently have 25 schools participating in MN
- 11 of those schools are within RLWD
- Currently have 21 schools participating in ND
- Over 1,400 sightings reported.

River of Dreams

- Juliette from Ste. Agathe, Manitoba Canada
- 5th grade RLCC, MN launched in 2016



River of Dreams



Schools that participate within RLVD: Clearbrook-Gonvick, Sacred Heart (TRF), Thief River Falls, Grygla, RLCC, Red Lake Falls, Win-E-Mac, Crookston, Fisher, East Grand Forks, Sacred Heart (EGF)



Thank you!
Questions/Comments?



Lindsey Kallis

Natural Resource Specialist

Lindsey.Kallis@redlakewatershed.org